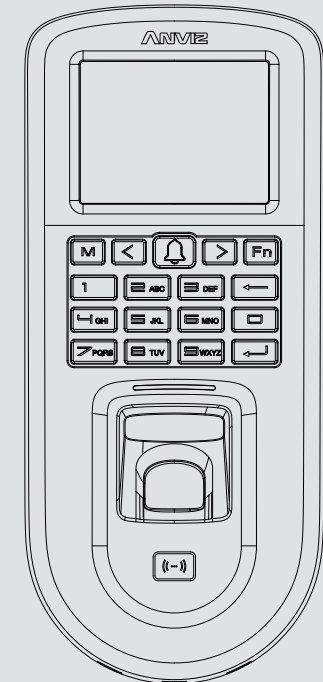


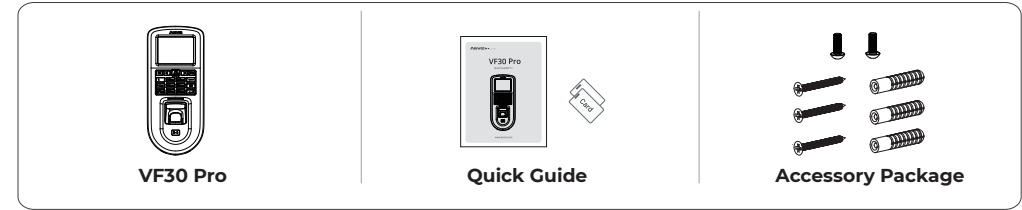
VF30 Pro

PoE Standalone Access Control

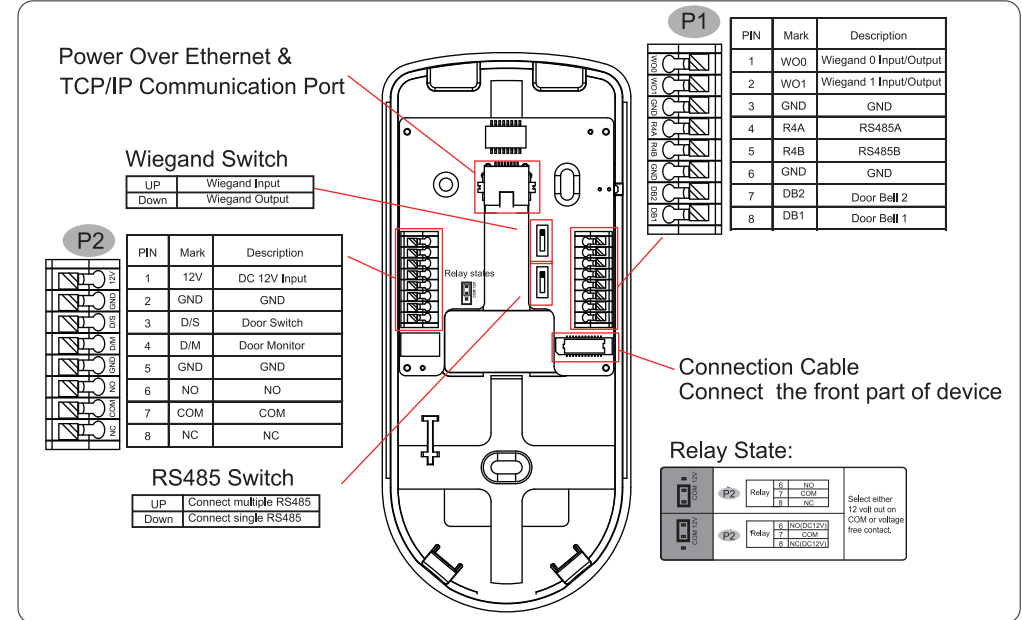
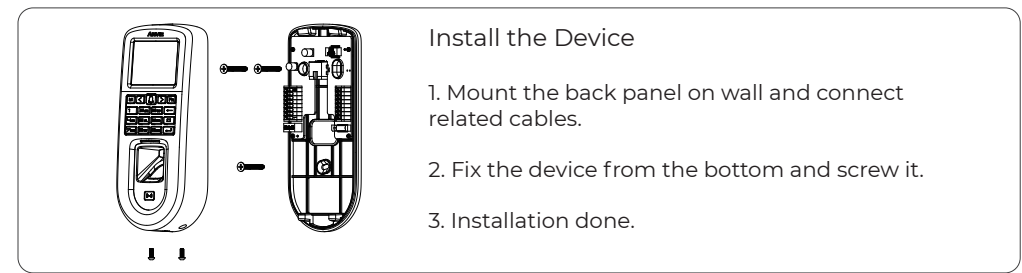
Quick Guide V1.3



1. Packing list



2. Installation Diagram & Installation Step

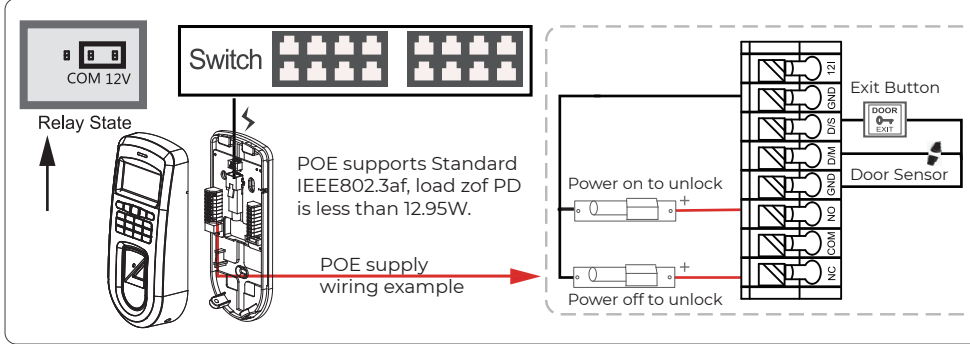


Important Notice

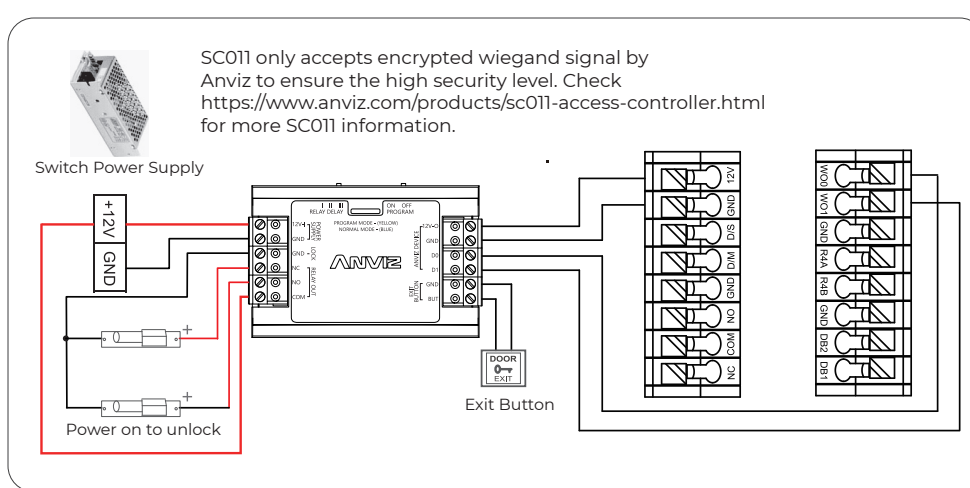
Please follow the quick guide wiring diagram. Damaged products due to the improper wiring are not covered by product warranty.

4. Power Over Ethernet Supply

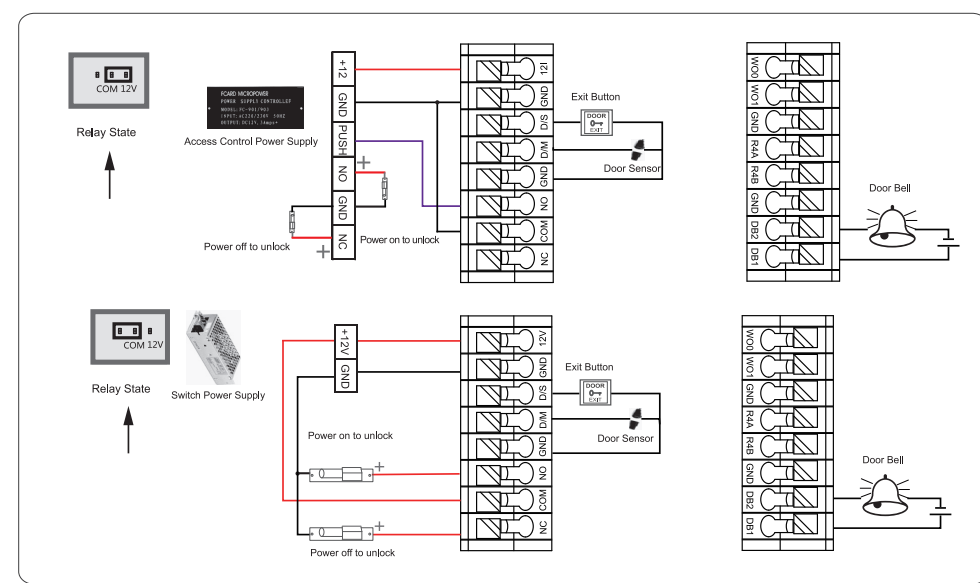
Power Over Ethernet provides network communication, and the power supplied is sufficient. It works for both devices and lock. When using PoE, total load should not exceed 12.95W. Overload power supply may cause damage to device.



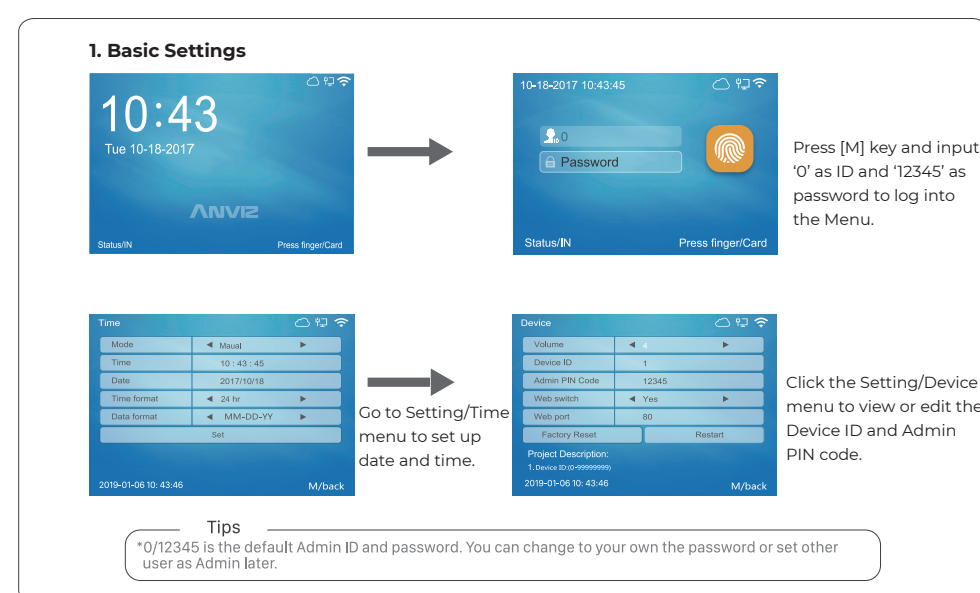
5. VF30 Pro & Anviz SC011



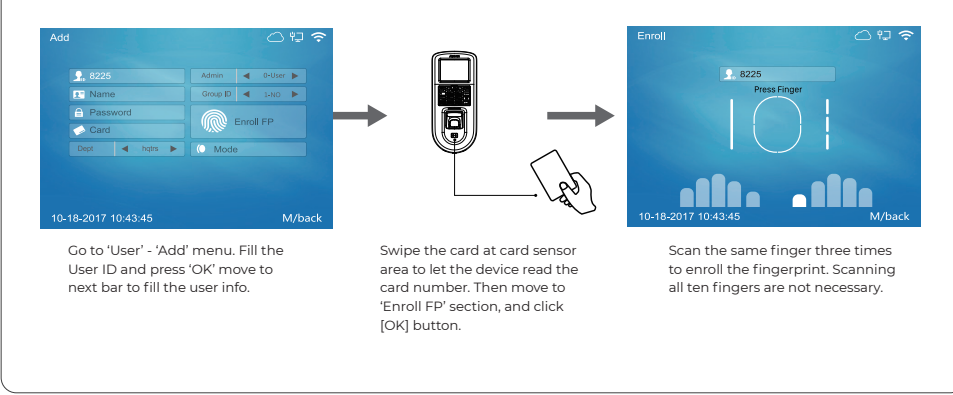
6. VF30 Pro & Access Control Power Supply



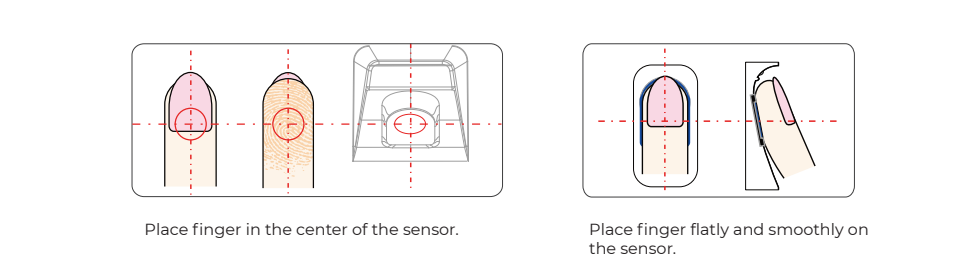
7. Operation Guide



2. Add Users



• Correct Method:



• Incorrect Method:





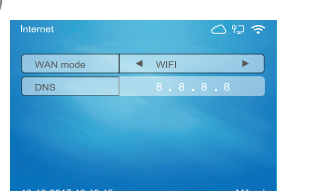
4. Character Input Method

- * Use the left[<] / right[>] button to move the cursor to the area you want to edit.
- * Press the [Fn] button to activate the character input mode. You will see "Aa" at the bottom of the screen.
- * Use left[<] and right [>] button to switch between "Aa", "123", "!?" and "Picture", you can select different option to enter letters, numbers, or special characters.

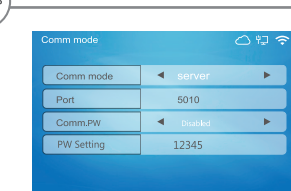
8. Communication Setting

- * Enter to the Network menu, and Ethernet to adjust Ethernet settings.
- * Switch to 'Network' -> 'Comm Mode', to change client or server mode by your needs.
- * Adjust IP address on management computer. For instance, device IP address is 192.168.0.218, then make sure the management computer IP address as 192.168.0.xxx (xxx can be any numbers, but different than 218).
- * When the device has WiFi function, it is suggested that the device is installed as far away from the metal parts as possible. The distance between the installation location of the device with WiFi function and the router should be within 30m.

1. WiFi Settings (Optional)




Go to Network/Internet menu to set up WAN mode as 'WIFI' and input the DNS server IP address.



Go to Comm mode menu to select Server or Client mode.

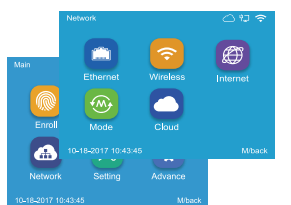


Device will search WiFi network automatically, select the WiFi network and input password.

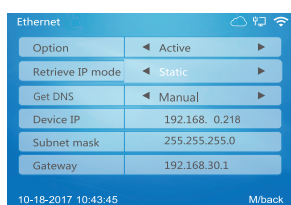


Go to WiFi menu to change TCP/IP settings, then select 'Choose WiFi' to go to the second window.

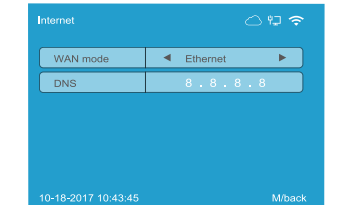
2. Ethernet Settings




Go to Network menu.



Go to Ethernet menu to change TCP/IP settings.



Go to Internet menu to set up WAN mode as 'Ethernet' and input the DNS server IP address.

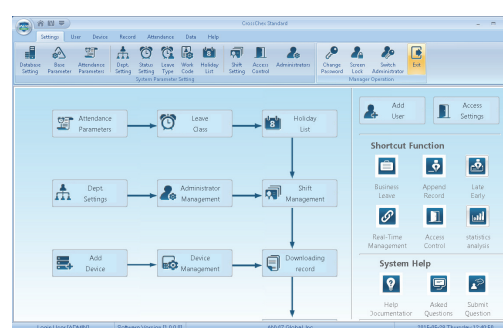


Go to Comm mode menu to select Server or Client mode.

..

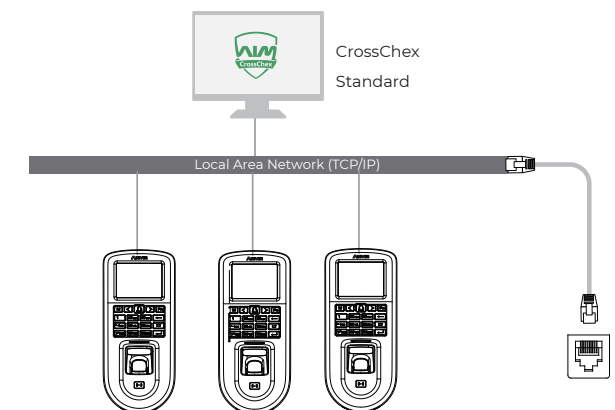
9. Working with Management Software

- Working with Management Software
Scan the QR code on user manual to install the software.



How to connect the Device with Software?

Method One: Connect to Network



Method Two: Connect to Cloud

VF30 Pro can be managed by Anviz cloud management platform CrossChex cloud.
For more details, please refer to <http://www.anviz.com/product/crosschex/cloud.html>

2. Enable Communication between Device and the Management Software CrossChex

Run the management software CrossChex.
Go to Device tab. Search and Add the device to management software CrossChex.
Click Synchronize Time button to communicate with Device. If Synchronize is successful, the device icon will turn to blue.

3. The Management Software CrossChex Features

- Device->Backup User: Download user info from Device to CrossChex.
- Device->Download Records: Download records from Device to CrossChex.
- User->Modify: Edit name or other user info. Then click 'Upload User' to Upload user info to device.
- Record->Search: Search and view the records.
- Attendance: Calculate, Search results and Generate reports.
- Data->Backup Database: Backup Database.
- Setting->Shift: Set up Time Table and Scheduling.
- Device->Device Parameter: Set up device. Clear records on Device or Reset Device to factory settings.



Scan the QR code to download CrossChex.

Its Never Too Late To Change



Dear Customer:

Thank you for choosing Anviz products. As the world's leading provider of security equipment and systems. Anviz has always attached great importance to environmental protection, we are promoting various environmental improvement measures in the circle of production, packaging and sales.

As the saying goes "It's Never Too Late To Change" --Every Year, Anviz has been burning millions of CDs and supplying world wide with our devices. In order to protect the environment, Anviz has decided to go "CD Free" campaign since June 1st 2019. We will provide QR code for you to download the electronic documents to make sure that you understand how to install and use Anviz devices.

Anviz appreciates your understanding and supporting our small efforts towards protecting the natural resources.



<https://bit.ly/2WugbYp>

Dropbox



<https://bit.ly/2Vn0wh6>

Google



<https://bit.ly/2J9qA95>

Anviz